

Paged

Synergy of nature
and technology



Filmed plywood –
phenolic films

IN-HOUSE STANDARDS
NO. 1/2020

 sklejkapaged.pl

NOT ALLOWED ON THE FUNCTIONAL SIDE OF THE PANEL

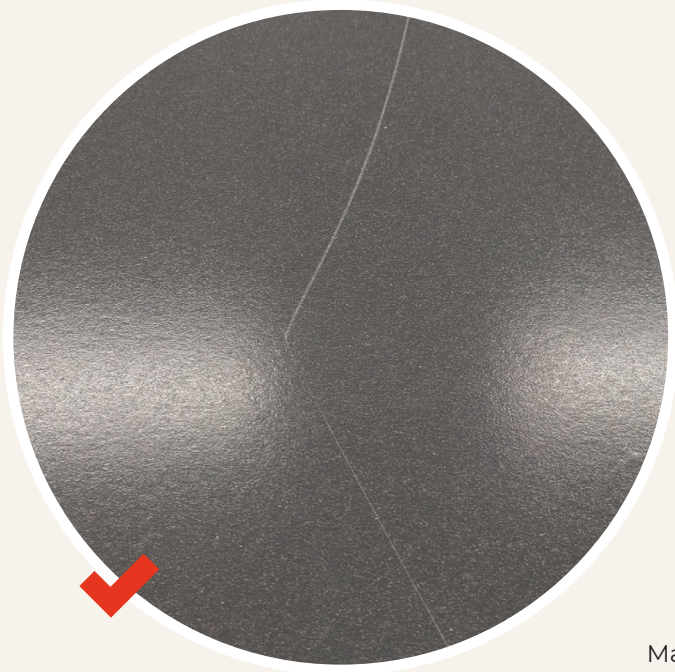
- ✘ Lack of film
- ✘ Film cracks
- ✘ Film burns (rough matt stains)
- ✘ Outer veneer splices that damage the surface of the film, surface lumps
- ✘ Different colour film inserts

ALLOWED ON THE NON-FUNCTIONAL SIDE OF THE PANEL

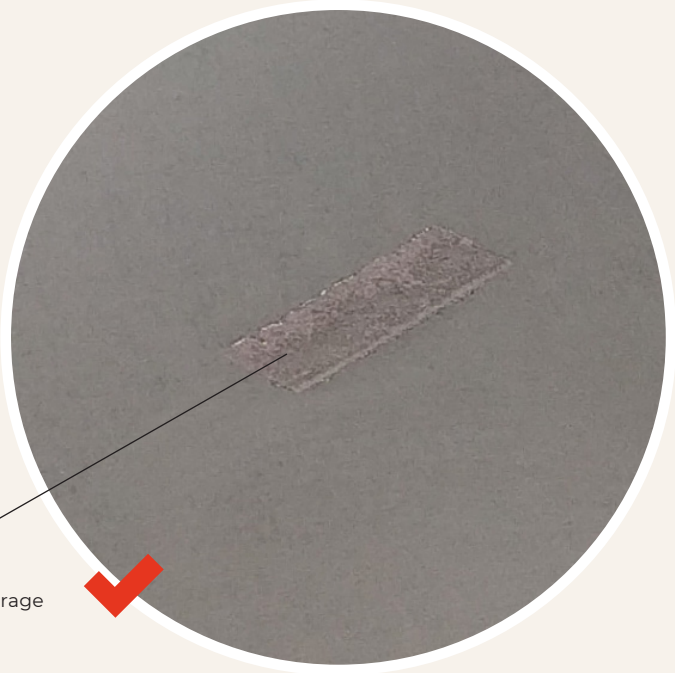
- ✔ Film burns (smooth matt stains)
 - Knot-holes in outer veneer layers
Allowed: up to $\varnothing 25\text{mm}$, 1 pc./m²
 - Cracks in outer veneer layers
Allowed with a maximum width of 5 mm and length of 300 mm, 1pc/running meter
 - Outer veneer splice overlay that do not damage the surface of film
- ✔ Outer veneer splices that do not damage the surface of the film
- ✔ Film marks and decoloration
Allowed for up to 20% coverage of the panel surface
- ✔ Matching colour film inserts and overlaps
Allowed for up to 1% coverage of the panel surface
- ✔ Film overlays
Allowed with a maximum width of 20 mm and length of 200 mm,
- ✔ Film dents and marks that maintain uniform film structure
Allowed: up to $\varnothing 10\text{mm}$, 1 pc./m².
- ✔ Film scratches that maintain uniform film structure
- ✔ Annual ring and grain structure, sound knots
- ✔ Pine wood resin permeating to the outer veneer in combi plywood
Allowed for up to 10% coverage of the functional side of the panel. Allowed on the non-functional side of the panel without restrictions
- ✔ Cutting and machining defects at the edges, e.g. paint chipping
Allowed with a maximum width of up to 3 mm from the edge
- ✔ Paint down flows on edges
Allowed with a maximum width of up to 5 mm from the edge
- ✔ Stripes, radiance and stains from press plates

Specific to the smooth finish
filmed plywood

PP film scratch
maintaining uniform film structure



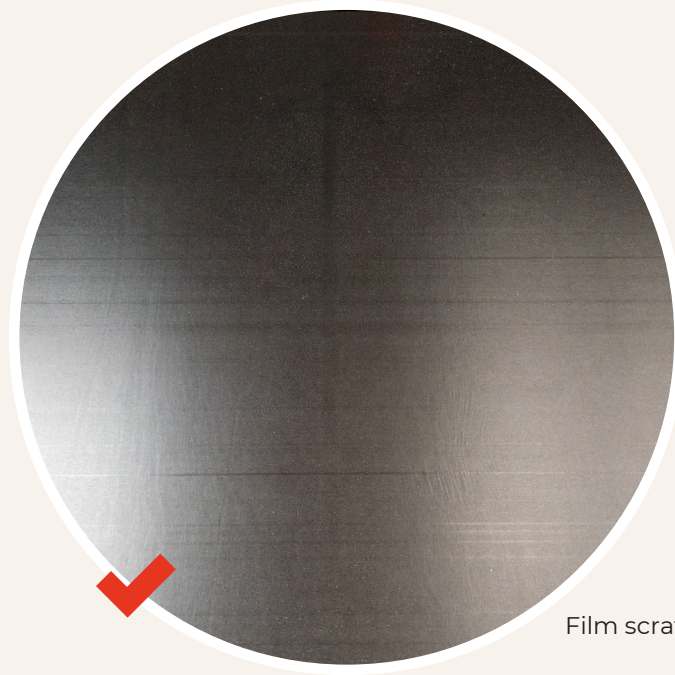
Matching colour film insert



allowed for up to 1% coverage
of the panel surface

Specific to the smooth finish
filmed plywood

Stripes, radiance and stains from press plates

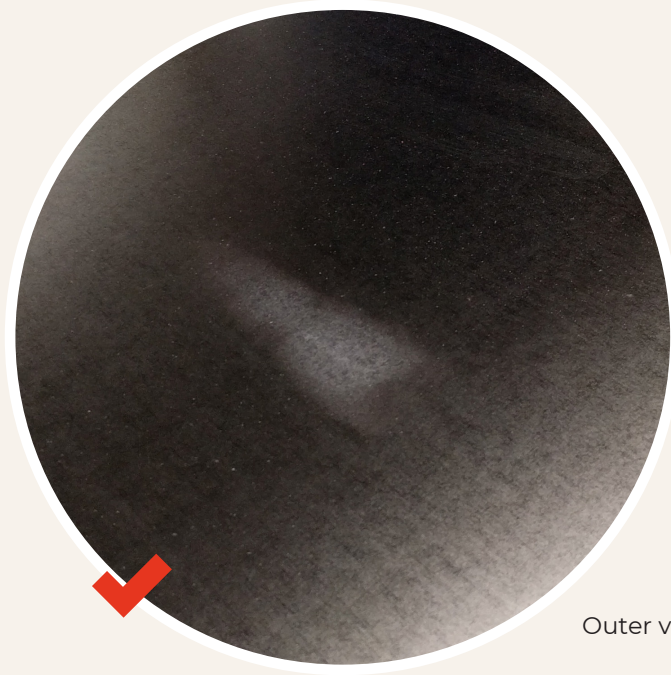


Film scratches that maintain uniform film structure

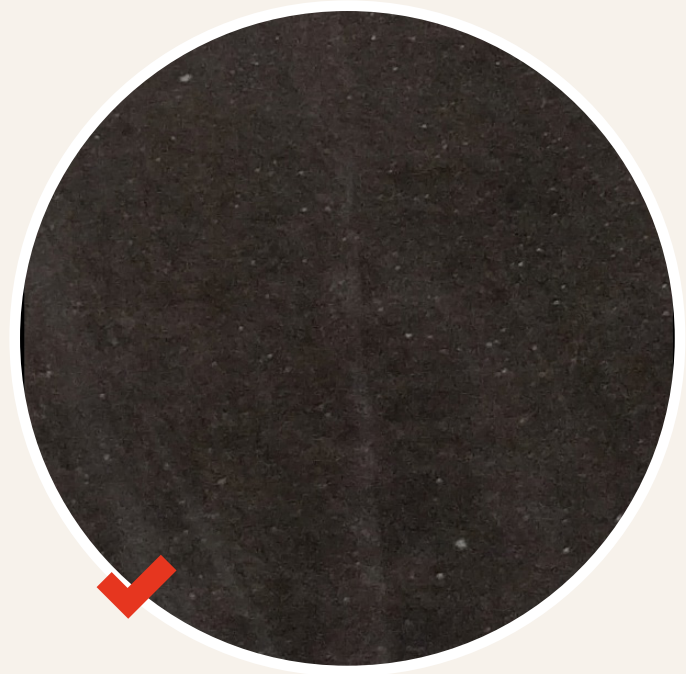


Specific to the smooth finish
filmed plywood

Film burns (smooth matt stains)

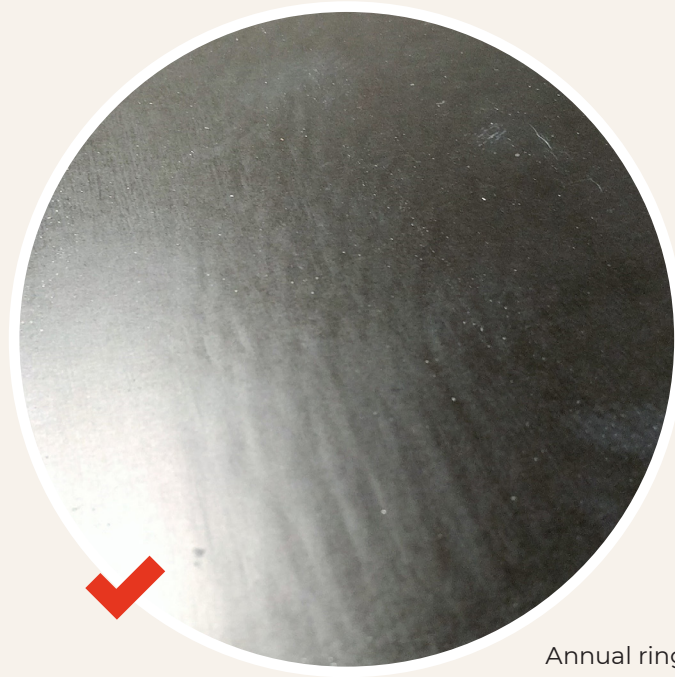


Outer veneer splice overlay that do not damage the surface of film

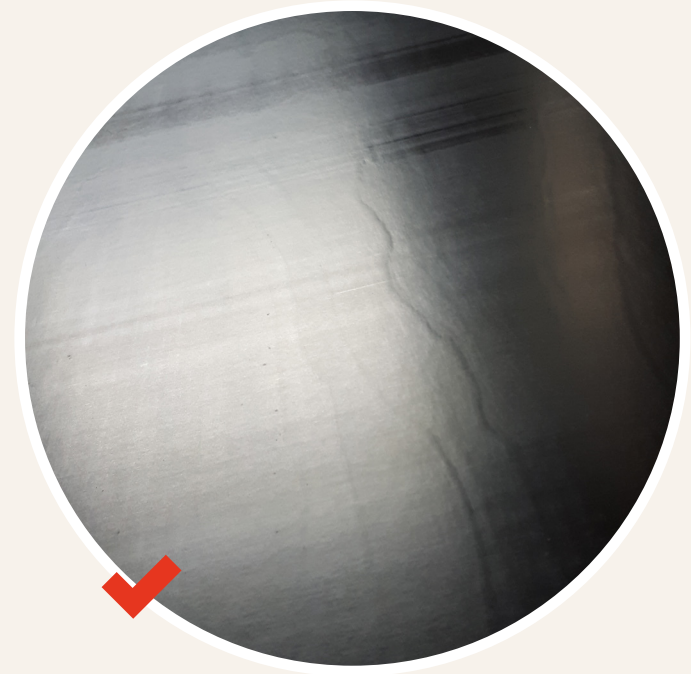


Specific to the smooth finish
filmed plywood

Annual ring and grain structure, sound knots

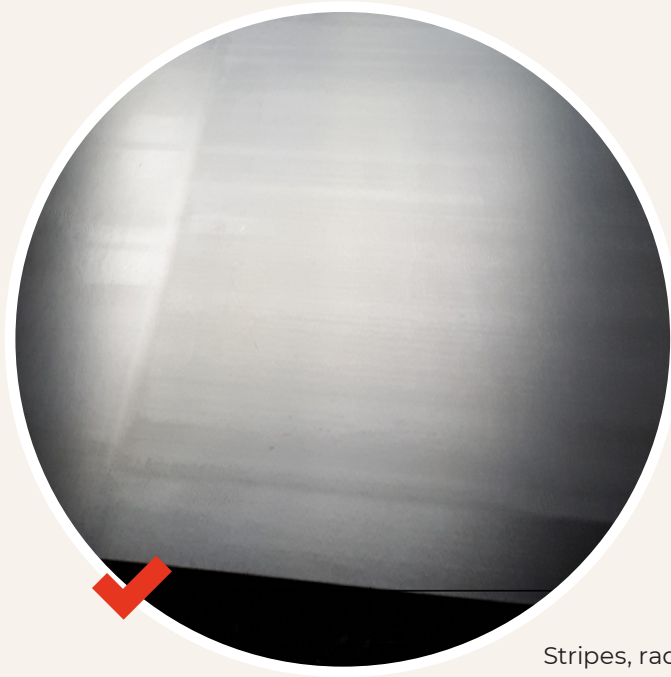


Annual ring and grain structure, sound knots

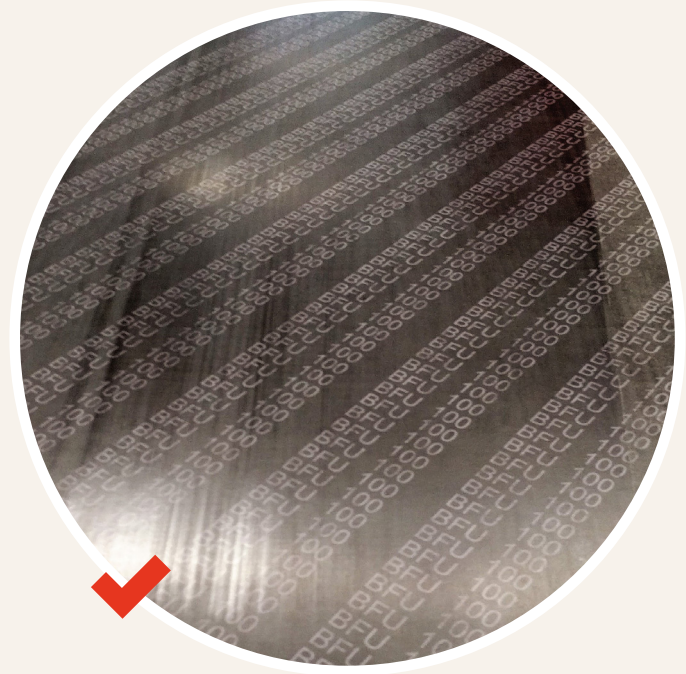


Specific to the smooth finish
filmed plywood

Stripes, radiance and stains from press plates



Stripes, radiance and stains from press plates



Specific to the smooth finish
filmed plywood

NOT ALLOWED ON THE FUNCTIONAL SIDE OF THE PANEL

- ✘ Lack of film
- ✘ Film cracks
- ✘ Film burns (rough matt stains)
- ✘ Outer veneer splices that damage the surface of the film, surface lumps i
Not allowed on the functional side of the panel
- ✘ Different colour film inserts
Not allowed on the functional side of the panel

ALLOWED ON THE FUNCTIONAL SIDE OF THE PANEL

- ✔ Film burns (smooth matt stains)
- Knot-holes in outer veneer layers:
Allowed: up to Ø25mm, 1 pc./m² on the functional side of the panel
Allowed on the non-functional side of the panel without restrictions
- Cracks in outer veneer layers:
Allowed with a maximum width of 5 mm and length of 300 mm, 1pc/ running meter on the functional side of the panel
Allowed on the non-functional side of the panel without restrictions
- Outer veneer splice overlay that do not damage the surface of film
- ✔ Outer veneer splices:
Not allowed on the functional side of the panel
Allowed on the non-functional side of the panel without restrictions
- ✔ Film marks and decoloration:
Allowed for up to 20% coverage of the functional side of the panel
Allowed on the non-functional side of the panel without restrictions
- ✔ Matching colour film inserts and overlaps:
Allowed for up to 1% coverage of the functional side of the panel
Allowed on the non-functional side of the panel without restrictions.
- ✔ Different colour film inserts:
Not allowed on the functional side of the panel
Allowed on the non-functional side of the panel without restrictions

- ✔ Film overlays:
Allowed with a maximum width of 20 mm and length of 200 mm on the functional side of the panel
Allowed on the non-functional side of the panel without restrictions
- ✔ Film dents and marks that maintain uniform film structure:
Allowed: up to Ø10mm, 1 pc./m² on the functional side of the panel
Allowed on the non-functional side of the panel without restrictions
- ✔ Film scratches that maintain uniform film structure
- ✔ Annual ring and grain structure, sound knots, wooden inserts, etc.
- ✔ Pine wood resin permeating to the outer veneer in combi plywood:
Allowed for up to 10% coverage of the functional side of the panel
Allowed on the non-functional side of the panel without restrictions
- ✔ Cutting and machining defects at the edges, e.g. paint chipping
Allowed with a maximum width of up to 3 mm from the edge
- ✔ Paint down flows on edges
Allowed with a maximum width of up to 5 mm from the edge
- ✔ Stripes, radiance and stains from press plates

Specific to the structured
finish filmed plywood

NOT ALLOWED ON THE NON-FUNCTIONAL SIDE OF THE PANEL

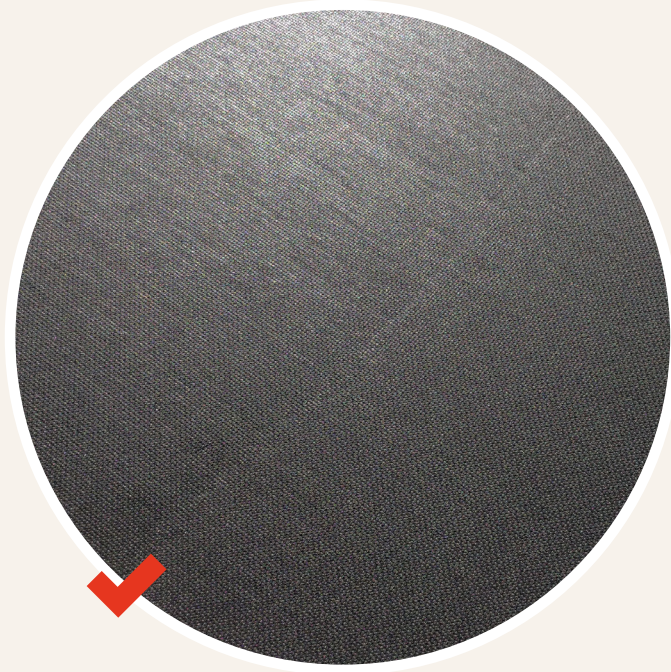
- ✘ Lack of film
- ✘ Film cracks
- ✘ Film burns (rough matt stains)

ALLOWED ON THE NON-FUNCTIONAL SIDE OF THE PANEL

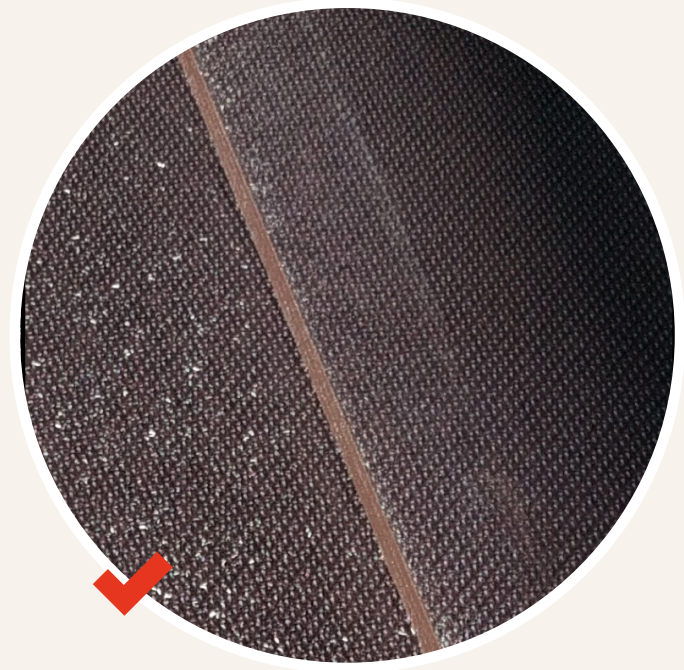
- ✔ Film burns (smooth matt stains)
Outer veneer splice overlay that do not damage the surface of film
- ✔ Outer veneer splices:
that maintain uniform film surface, film lumps
- ✔ Film marks and decoloration
- ✔ Matching colour film inserts and overlaps
- ✔ Different colour film inserts
- ✔ Film overlays
- ✔ Film dents and marks that maintain uniform film structure:
- ✔ Film scratches that maintain uniform film structure:
- ✔ Annual ring and grain structure, sound knots, wooden inserts, etc.
- ✔ Pine wood resin permeating to the outer veneer in combi plywood
- ✔ Cutting and machining defects at the edges, e.g. paint chipping
Allowed with a maximum width of up to 5mm from the edge
- ✔ Paint down flows on edges
Allowed with a maximum width of up to 5mm from the edge
- ✔ Stripes, radiance and stains from press plates

Specific to the structured
finish filmed plywood

Outer veneer splice
maintaining film structure



Edge paint



Specific to the structured
finish filmed plywood

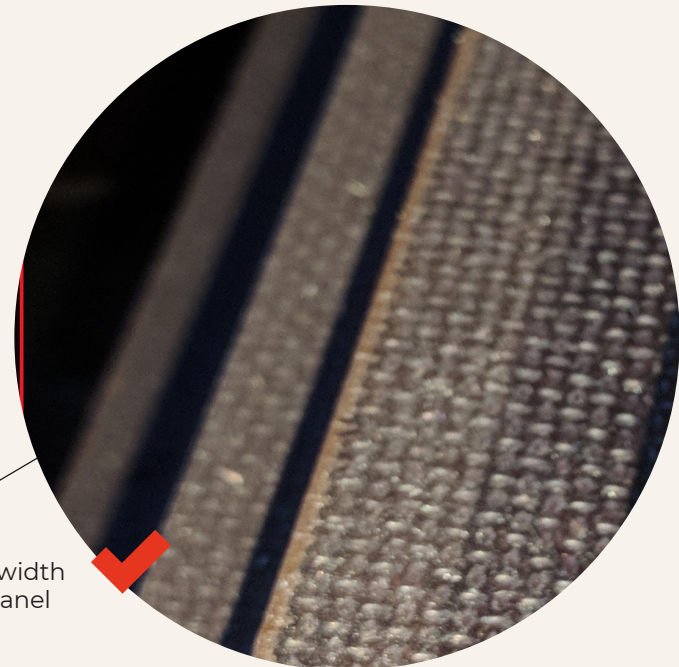
Specific to the structured
finish filmed plywood

Matching colour film insert



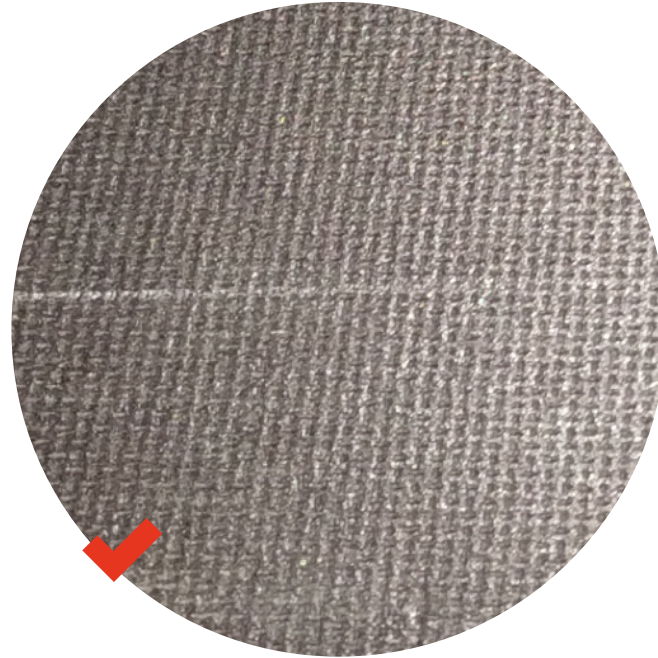
Allowed for up to 1% of total
panel surface

Edge paint coverage



Allowed for up to 3mm width
from the edge of the panel

Outer veneer splice
maintaining film structure



**Specific to the structured
finish filmed plywood**